

Balloon
Pos.
Qty.

B

C

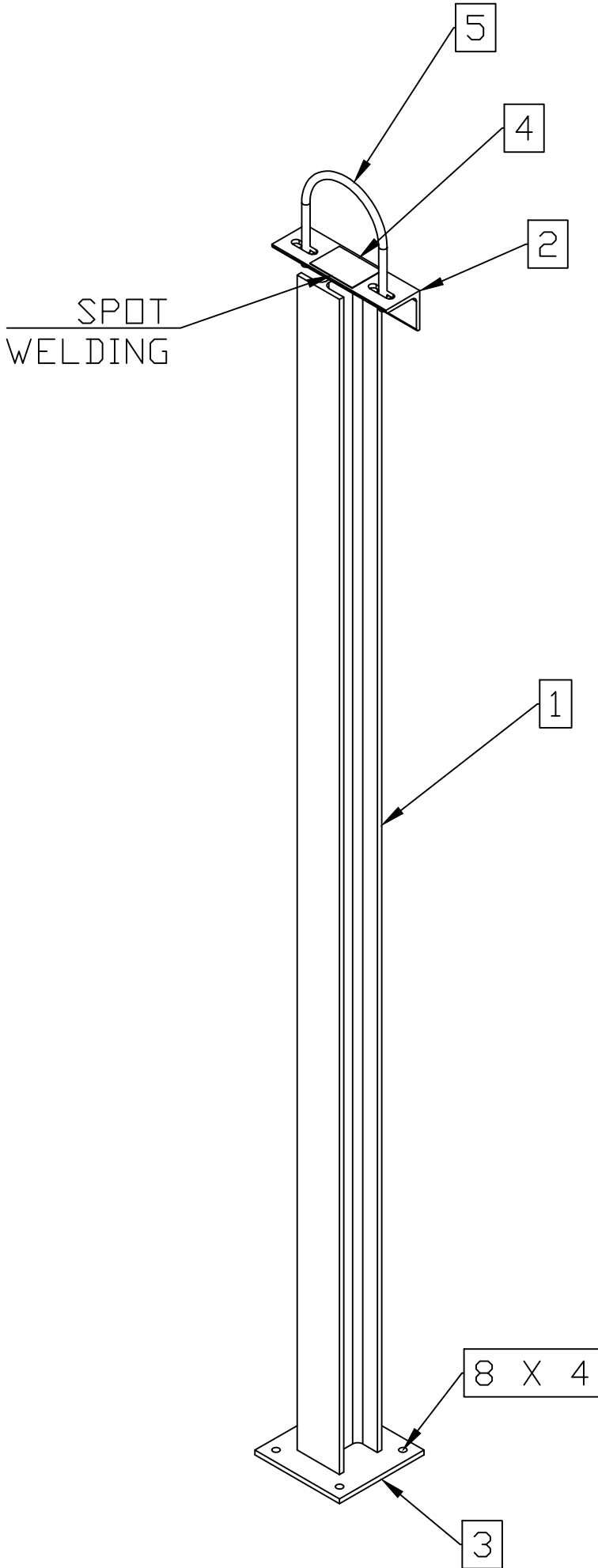
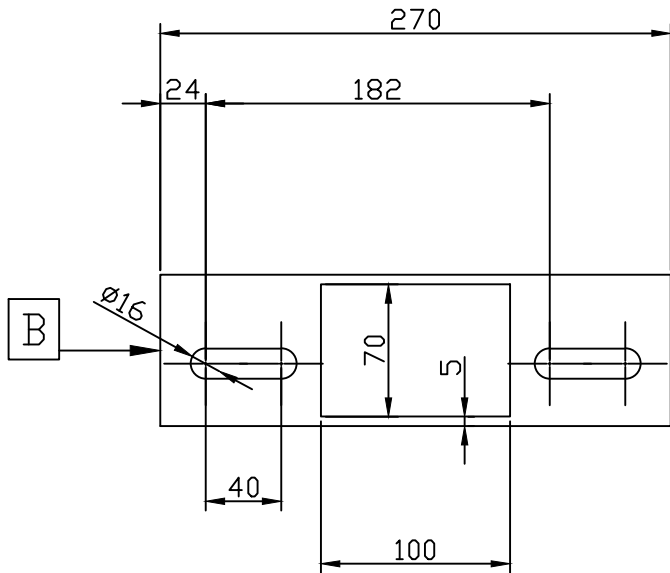
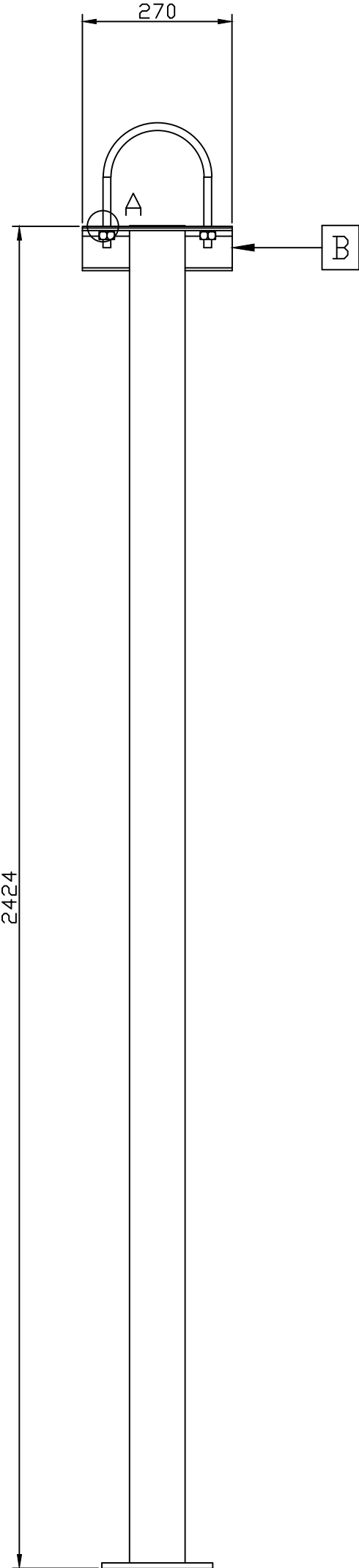
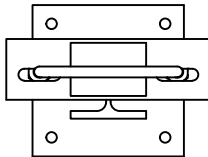
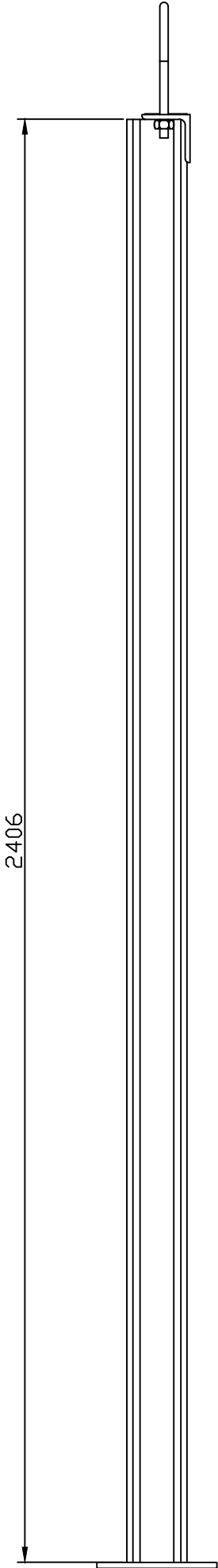
D

E

F

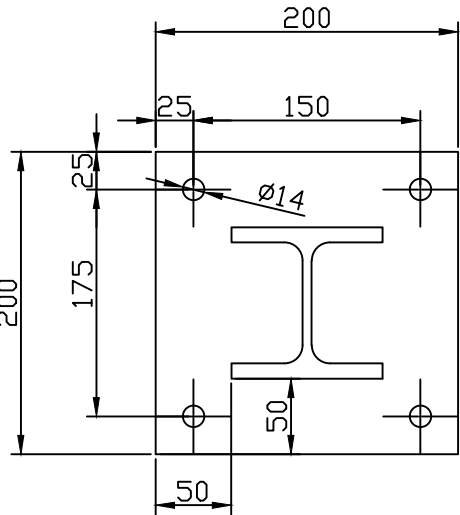
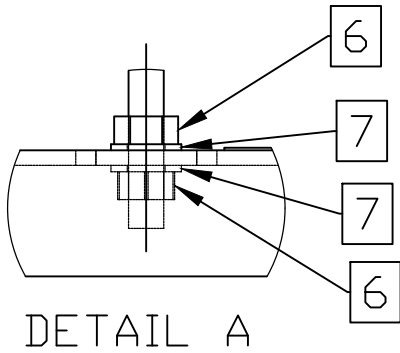
G

This drawing belongs to IFI Industrial Furnaces INSERTED and must not be used or reproduced without authorization.



BILL OF MATERIALS			
ID	QT (Ud/M)	DESCRIPTION	MATERIAL
1	2.406	HEB 100	S235JR
2	0.270	L 80x80x8	S235JR
3	1	S235JR PLATE 200x200x10	S235JR
4	1	AISI316L PLATE 200x70x1	AISI 316L
5	1	U-BOLT DN150 M14 DIN 3570 with plastic cover	STEEL
6	4	NUT M14 8 DIN934	8
7	4	FLAT WASHER M14 St DIN125	St
8	4	ANCHOR BOLT M12x120 8.8	8.8

QTY: 2 UNIT



PLATE

UNSPECIFIED WELDS:			
Note: Percentage (%) of the weld in relation to the smallest section of the weld joint.			
Non-individual tolerances according to DIN 7168.		Drawn 3D:	
		Drawn 2D:	
		Date: 1/12/2025	
Oxygen Route		Rev. N° Drawing:	
TMT (FVRB-2,7-25)		2558-331X-TMT-ESR10-SUP17	
		Scale 1:40	Weight (kg)
		Sheet 1 of 1	Format A2



1st Dihedral ISO 5456-2